

MEDICAL OFFICE for LEASE

1901 Hawthorne Road, Suite 340
Winston-Salem, NC

- 1,436 +/- s.f.
- \$19.50 psf
- Hawthorne Medical Plaza
- Easy access to I-40, Hanes Mall Blvd
- Large reception area
- 3 Exam Rooms
- 1 Office with separate entry
- 1 Lab
- Break room
- Medical records room
- Storage rooms
- On-site parking



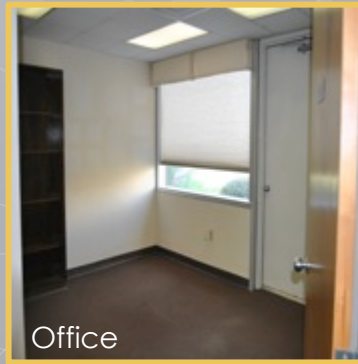
Large waiting area



Lab Room



Front Office/
Reception



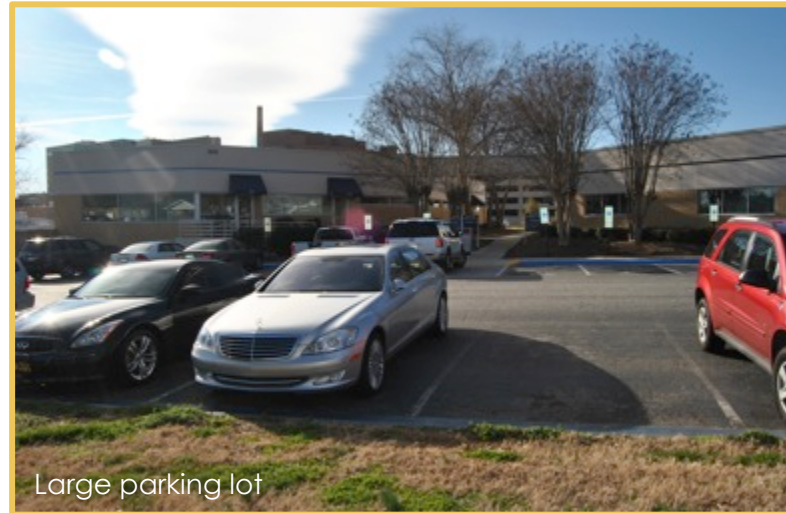
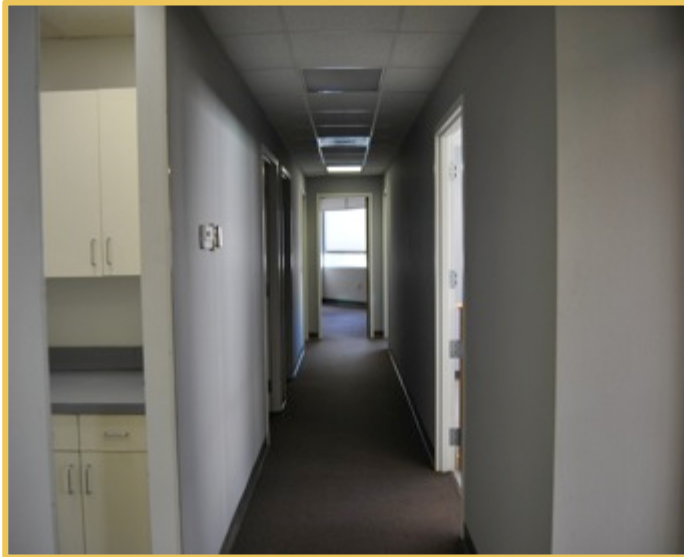
Office



Commercial Realty Advisors, LLC
101 North Cherry Street
Suite 502
Winston-Salem, NC 27101
P: 336.793.0890
F: 336.722.2583
www.cra-llc.net

Jeff Andrews x 103
jeff@cra-llc.net

1901 Hawthorne Road, Suite 340
Winston-Salem, NC



Large parking lot